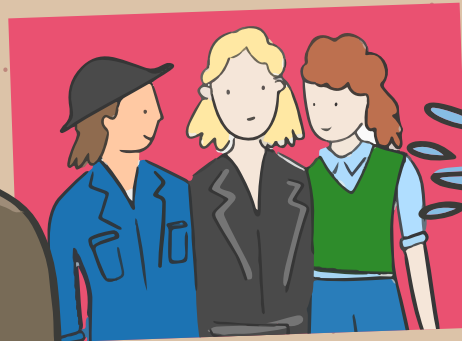


THE HEROIC WAR YEARS



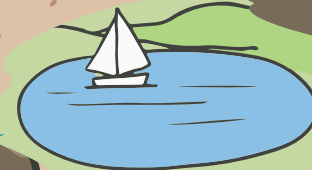
With the outbreak of two world wars, it was up to our female employees to step up to the plate and keep Bristol Water running



1940s

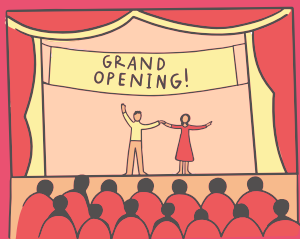
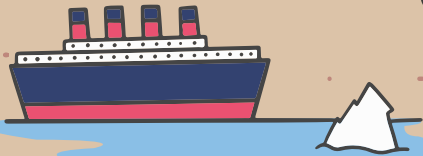
The Second World War breaks out, scuppering Bristol Water's plan to convert farmland into what is now Chew Valley Lake. During the Blitz, the pipes that cholera-kicking clever clogs Budd and Fry worked so hard to create are partly destroyed. But some good news is around the corner for Bristol Water as Cheddar Lake (that cool circular lake you see from Cheddar Gorge) is up and running, keeping fresh water flowing to our customers..

Cheddar Lake is the very first manmade lake to offer sailing – ahoy!

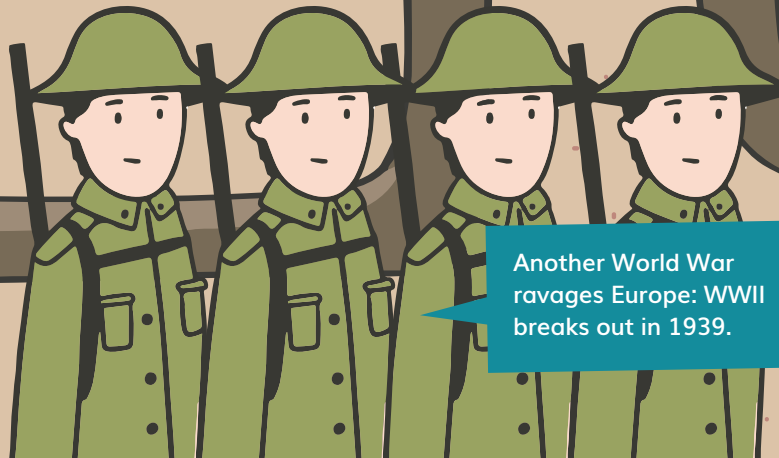


1910s

Iceberg, right ahead! In 1912, the world-famous RMS Titanic hits an iceberg on her maiden voyage and sinks. Two years later, World War I breaks out and our male employees are sent away to war. To keep the business going, we take on our first female employees – and they quickly become invaluable members of the team.



Bristol Hippodrome opens in 1912 with an amazing water spectacular featuring gallons of water and diving horses!



Another World War ravages Europe: WWII breaks out in 1939.

1950s

A decade later than planned, work on Chew Valley Lake begins. It takes 300 people to dig it – mostly by hand! That's impressive given the lake can hold enough water to give nearly everyone on earth a nice cup of tea. Six years later, in 1956, Queen Elizabeth II officially opens the Lake, giving us our very first brush with royalty!



60-second history quiz!

Q Pioneering pilot Amy Johnson was the first woman to fly solo from England to which Country in 1930. Extra mark for the name of her plane?

Q In 1928 a mouse with big ears made his debut in the film Steamboat Willie, who was it?

Q When Queen Elizabeth II opened Chew Valley lake, how long had she been Queen for?